



Flat 4, 43 Churchfields Road, Salisbury, Wiltshire, SP2 7NW

£850 PCM

## About The Property

This well-presented one-bedroom flat is located on the first floor and is just a short walk from both the city center and Salisbury train station.

The accommodation includes a communal entrance hall with stairs leading to the first floor, where you will find the front door to Flat 4. Inside, there is an inner entrance lobby that leads to a spacious and bright lounge diner. There is also an airing cupboard containing a pressurized hot water cylinder.

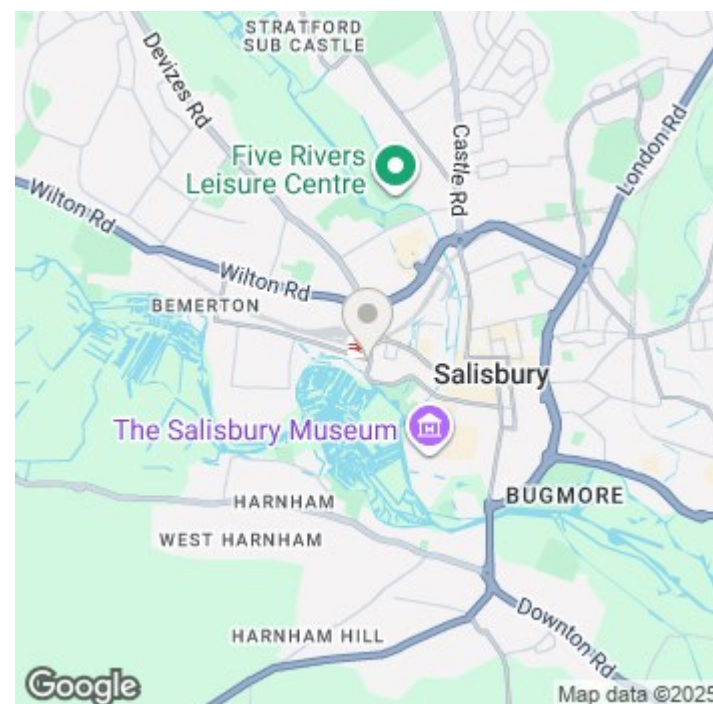
The fitted kitchen features a built-in electric oven and hob, as well as space for a washing machine under the counter and a fridge freezer positioned opposite the window. The flat has one double bedroom with fitted double wardrobes.

The newly renovated bathroom includes a bath, a shower screen, and a mixer tap shower attachment over the bath. The property is offered unfurnished and has modern electric heaters. Residents can enjoy access to a communal courtyard and shed, and on-street parking is available with a residents permit.

- Convenient for railway station
- First floor flat
- Large double bedroom
- Lounge/dinner
- Newly fitted bathroom
- Council tax band A
- Modern electric heating
- Double glazed
- Communal garden and shed
- On street permit parking



sq ft

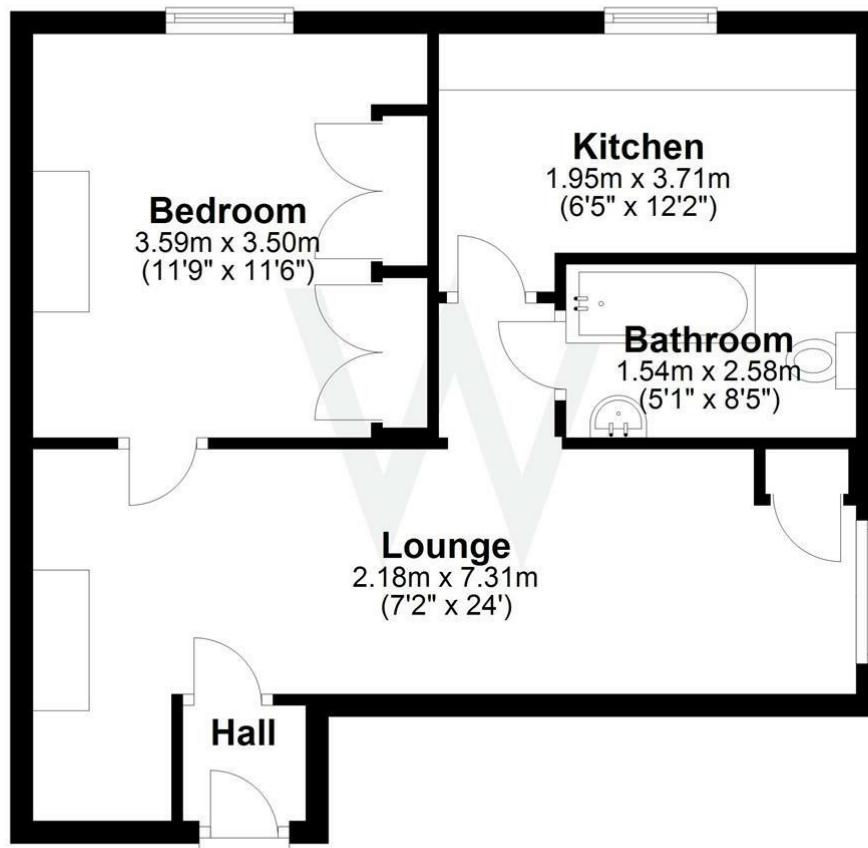






## First Floor

Approx. 45.6 sq. metres (491.2 sq. feet)



Total area: approx. 45.6 sq. metres (491.2 sq. feet)

## Further Information

Let available date: 2nd January 2026  
NB: This date is provisional and will only be confirmed once referencing has been successfully completed.

Property type: Flat

Furnish type: Unfurnished

Deposit: £980

Local authority: Wiltshire

Council Tax: Band A

EPC: E(47)

### Energy Efficiency Rating

	Current	Potential
Very energy efficient - lower running costs		
(92 plus) <b>A</b>		
(81-91) <b>B</b>		
(69-80) <b>C</b>		<b>78</b>
(55-68) <b>D</b>		
(39-54) <b>E</b>	<b>47</b>	
(21-38) <b>F</b>		
(1-20) <b>G</b>		
Not energy efficient - higher running costs		
<b>England &amp; Wales</b>		EU Directive 2002/91/EC 